

MTN 017

Anorectal Sample Collection

Ross D. Cranston

Protocol Chair





Perianal exam



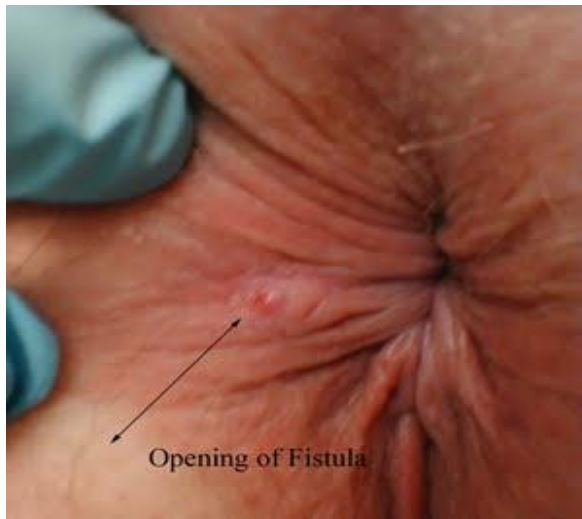
Haemorrhoids



Traumatic
Ulceration



Fissure



Fistula



Herpes Simplex



Abscess

Digene Female HPV Swab



Anal HPV

- Insert a water-moistened Dacron swab from the Digene Female HPV Swab Specimen Collection Kit a minimum of 6 cm into the anus
- With pressure on the distal end of the swab, rotate it gently and slowly in a circular fashion as it is withdrawn over 10-15 seconds
- Place the swab in the specimen transport tube, snap shaft off to fit and re-cap tube securely

Digital Rectal Exam

- Insert a Good Clean Love[®] lubricated gloved finger into the anal canal and sweep around the internal anal circumference
- In addition to defining any irregularities, this will relax the anal sphincter and allow easier passage of the anoscope

Standard Anoscopy

- Use the Good Clean Love[®] personal lubricant to lubricate the anoscope
- Insert the lubricated anoscope into the anal canal until the anoscope 'wings' touch the anal verge
- Remove the obturator
- Use a lighted instrument (e.g.otoscope or torch) to illuminate the rectum
- Visually assess the rectum, then after the swabs/sponges are taken, assess the anal canal as the anoscope is withdrawn

Anoscope



Ansocope




anal verge

Anoscope in situ



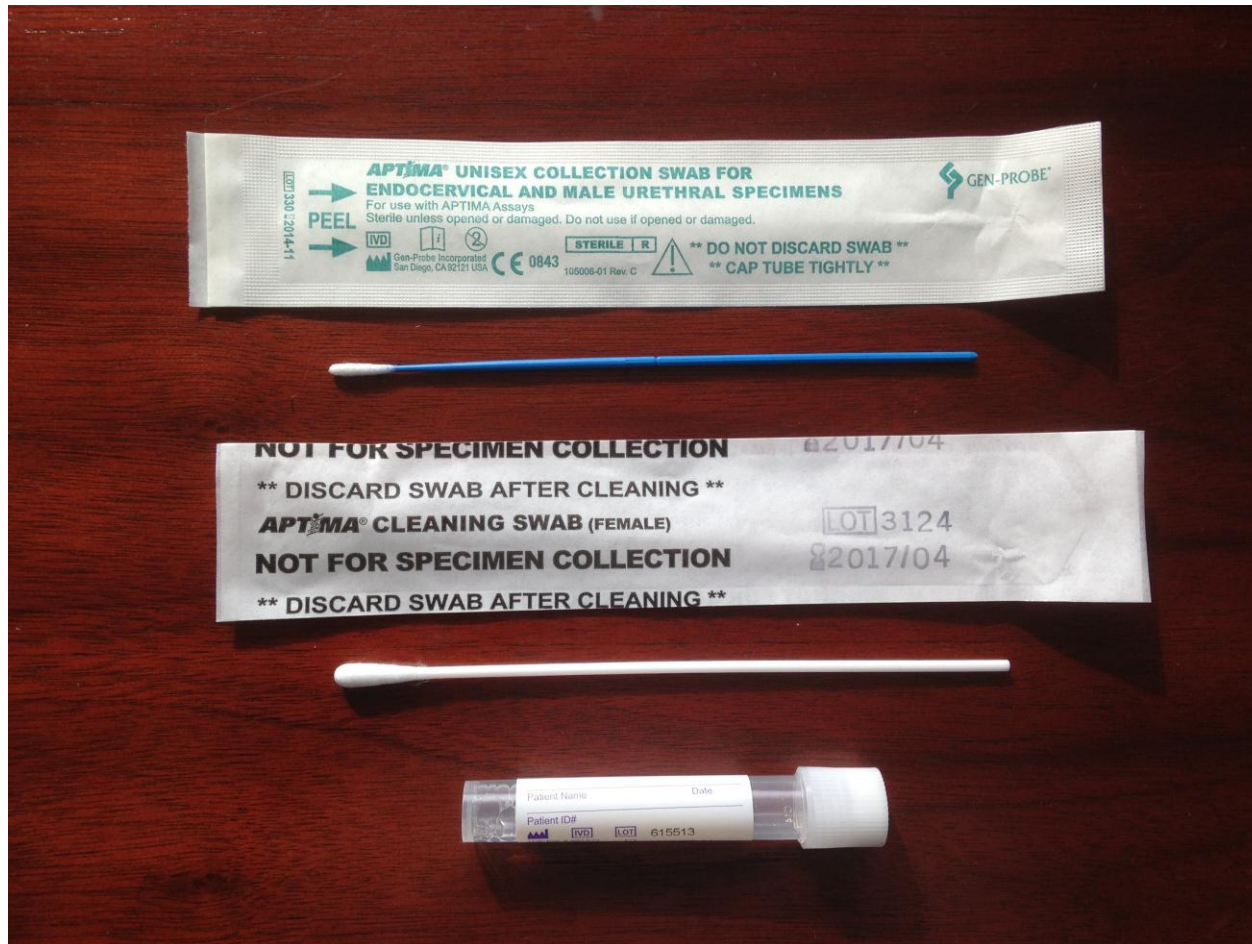
Specimen Collection

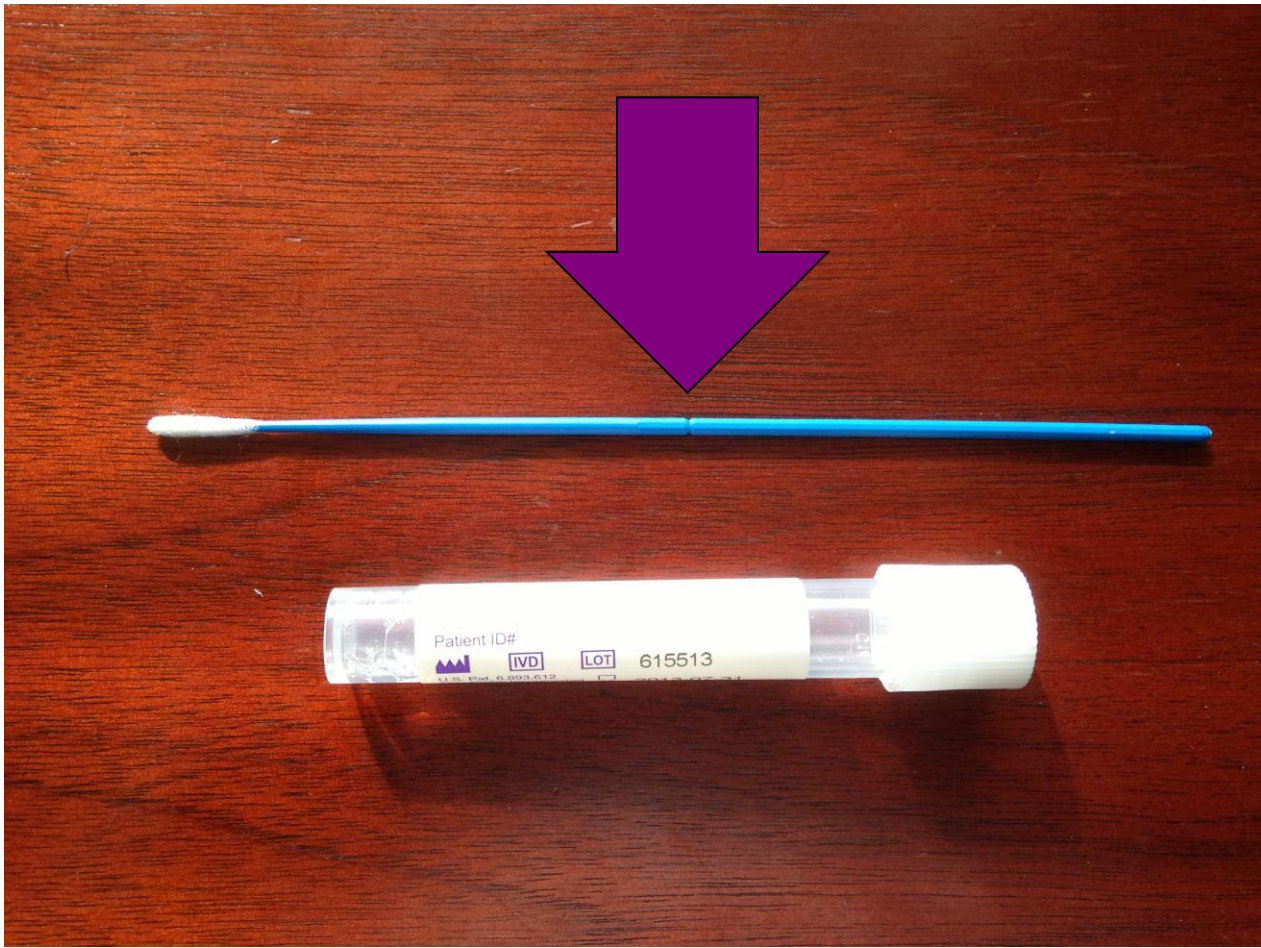
- GC CT
- PD
- PK



GC CT

Gen Probe Aptima kit





Rectal GC/CT Swab Collection

- Insert GenProbe Aptima 2 swab for GC/CT NAAT through the anoscope.
- Aim the swab into the center of the rectal tissue and roll it through 360 degrees.
- With draw the swab, and hand it to an assistant (you will need to keep the anoscope in place for further swabs)
- The swab should be snapped at the score line and placed in the transport tube and capped

Rectum (anoscope fully inserted)

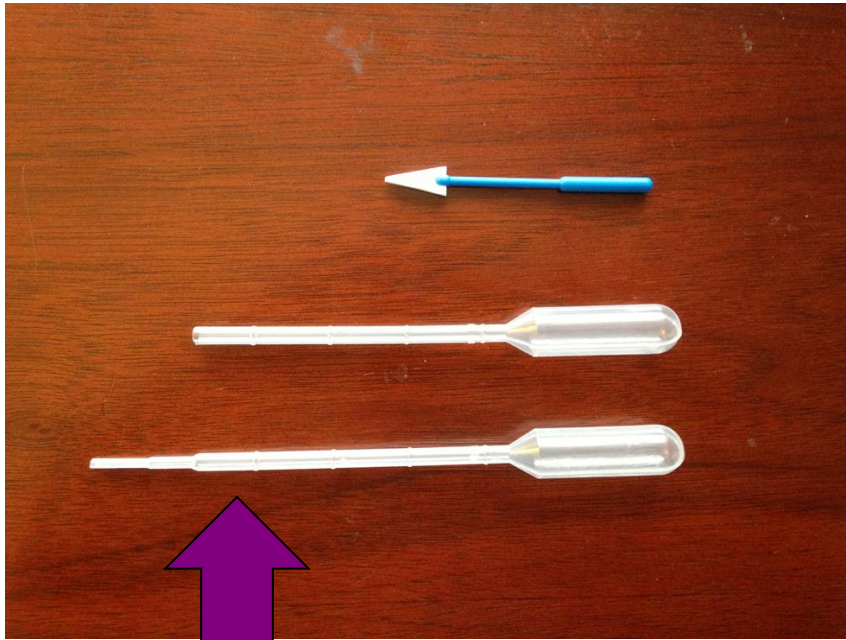




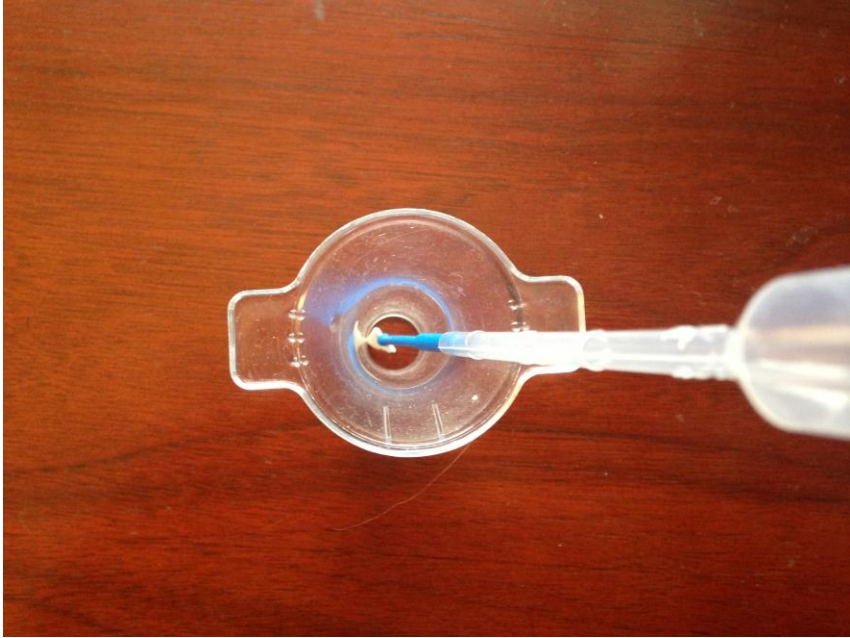


PK and PD

PK/PD Swab Assembly

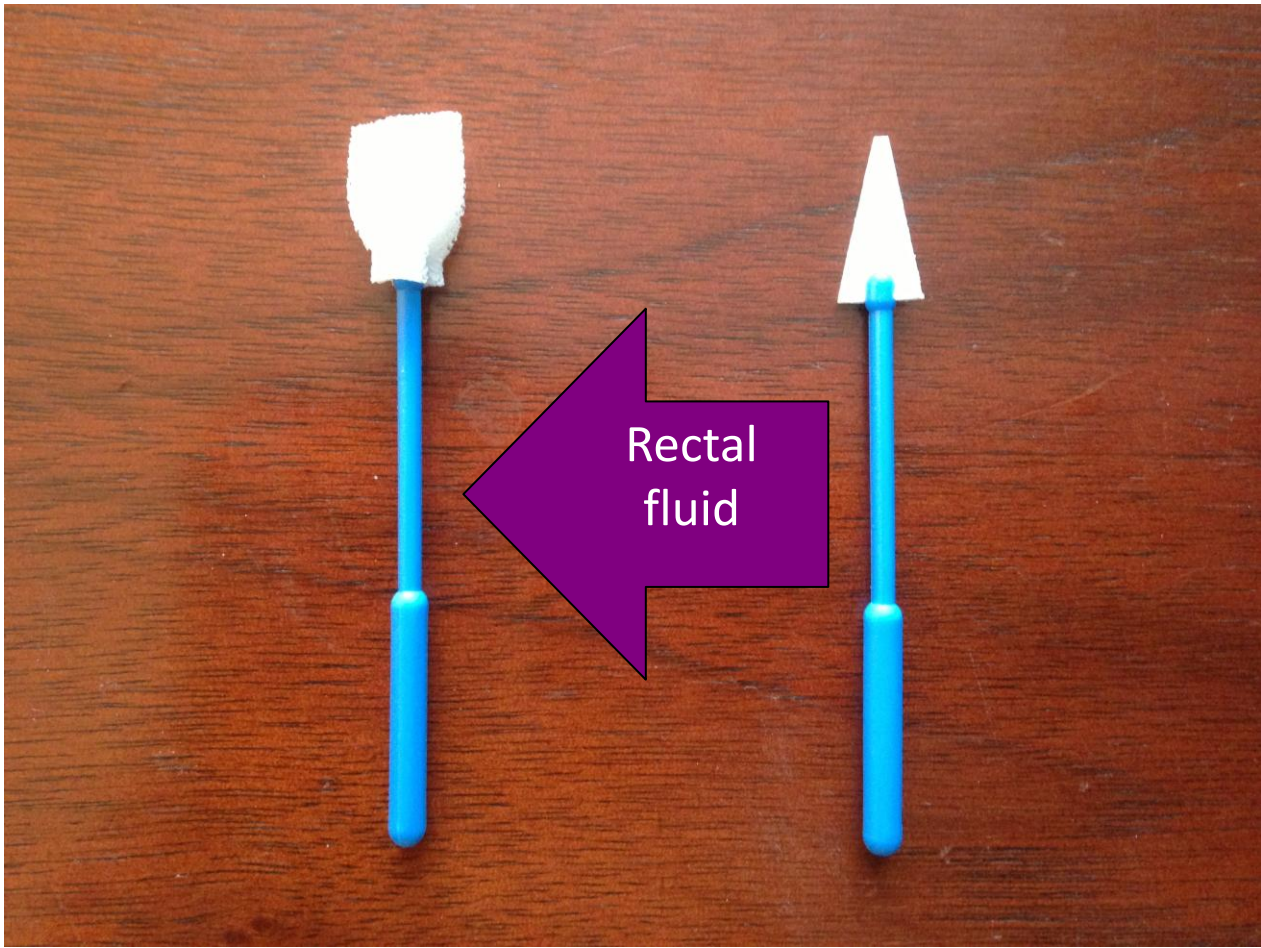


Cut in the middle of the 3rd gradation



Rectum (anoscope fully inserted)





Anorectal Transition Zone





Thank You!